

Figure 1 Interface

This tool is used for catching logs through DIAG port, you can use it follow the instructions below:

1. First of all, you need to locate the bpLog.exe and config file in the same path, or the tool can't be used. Do Not change config file, unless some special situations.
2. Input DIAG port number, when wireless module connected to the computer, you can see the DIAG port number in "Device Manager", as shown in Figure 2(in this case, the DIAG port number is 5, name of the DIAG port include string "diag", it may different from the name shown in Figure 2)

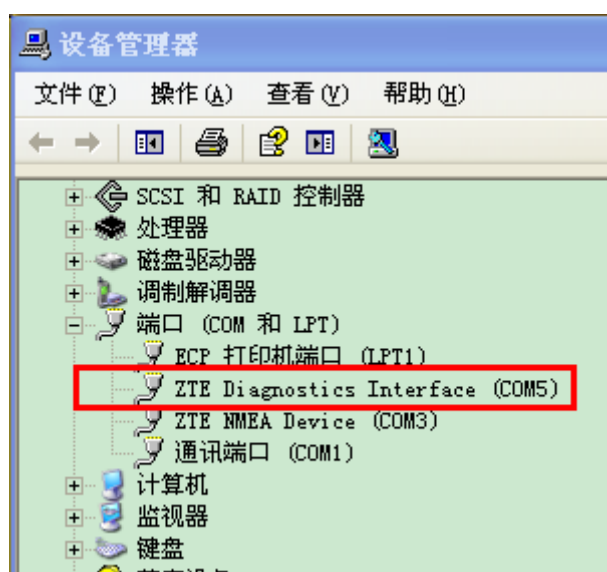


Figure 2 Port Number

3. Choose mode: keep it as default value 0, unless some special situations.
4. Advanced Options: Keep the check box (on the right of Start button) unselective as default.
5. When all above is done, click button "Start" to start catching log.
6. After catching started, the "Start" button is hide and the "Stop" button is visible, you can click "Stop" button to stop catching, see Figure .

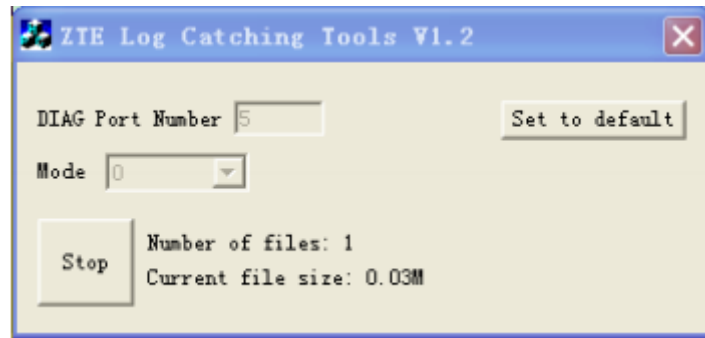


Figure 3 Interface when catching

7. The maximum size of a single log file is 32M, so if the size of log is larger than 32M, it will be stored in multiple files. When catching, on the user interface, you can see how many files and the size of last file.
8. Notice: When catching, be sure ZTE device is connected to the computer, if you want to disconnect the device, click the “Stop” button first!

**Our computer's language is Chinese, so there were many Chinese characters in Figure 2, begging your pardon!